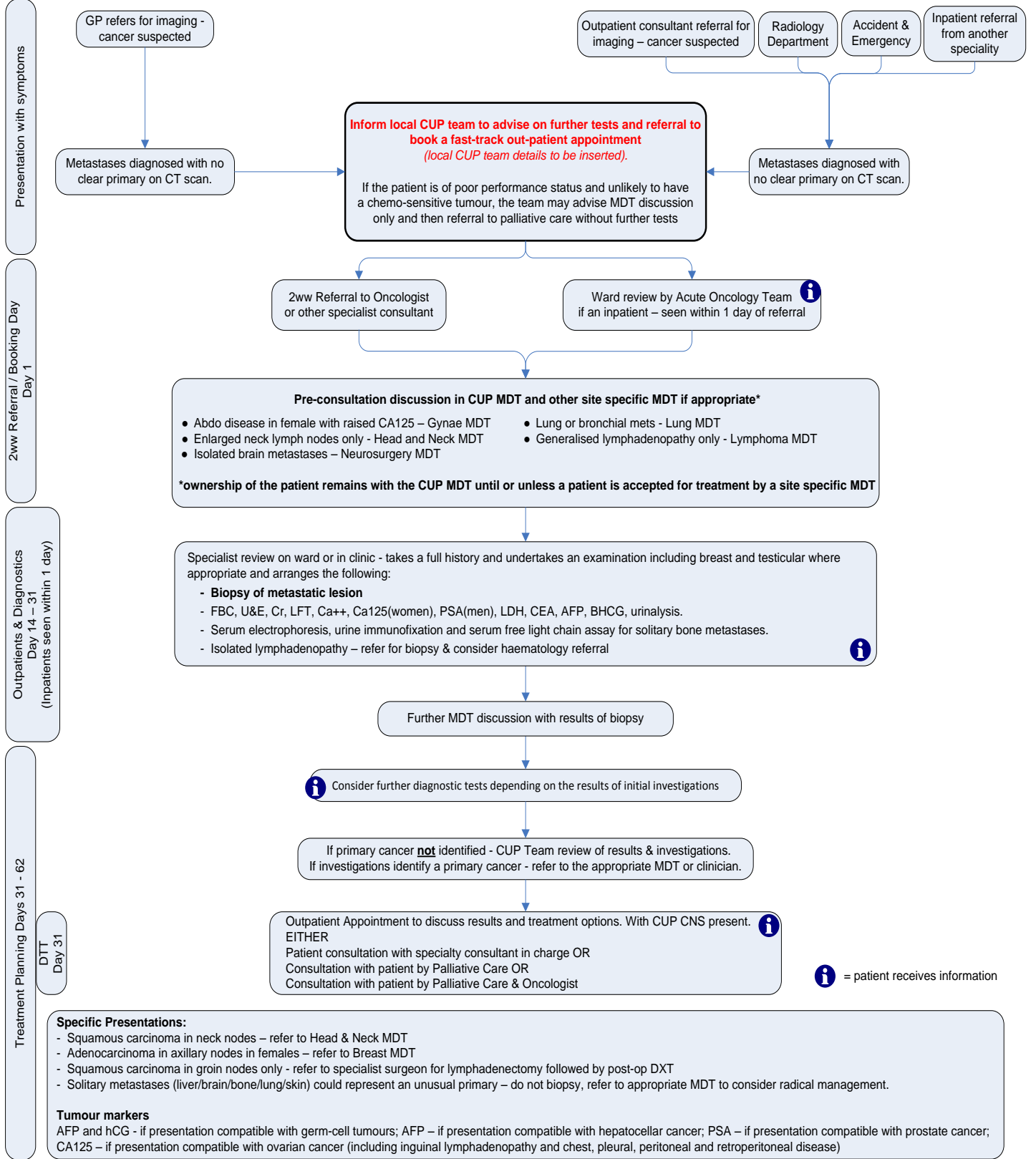


**PATHWAY FOR SUSPECTED METASTATIC MALIGNANCY OF UNKNOWN PRIMARY ORIGIN (no primary seen on CT chest, abdomen and pelvis)**

**CNS supports and signposts patient throughout.**



This pathway has been produced by representatives of the Thames Valley Cancer of Unknown Primary (CUP) Working Group.

Marion Foster, Service Improvement Manager/CUP Care Pathway Version 2 FINAL October 2012

Copyright © Thames Valley Cancer Network 2012